



478 Janette
\$ 2,000,000
Lot: 75' x 112'
6 units at
~1400 Sq Ft
3 Bed / 2 Bath



- ◆ 2 Storey Brick
- ◆ Brand New Covered Front Entrance
- ◆ Efficient Heating, & Cooling system with AC, HRV
- ◆ Individual Private Entry
- ◆ Fire and Noise Separation

- **Individual Laundry**
- Engineered Vinyl Plank Flooring
- Front Covered Porch
- **Granite Kitchen and Vanity Tops**
- Kitchen Backsplash
- Upgraded Lighting, Plumbing
- Fixtures, & Trim Package
- Energy Star Windows
- **Water (Fridge)**

- Conserving Toilets
- LED Pot Lights
- 24" x 24" Polished Porcelain Tile Floor
- Stone Sills, Address Stone
- **TruProtection™ Lifetime Shingles**
- Rough in Alarm, Cat 5, HDMI, Cable
- .97 EF Tankless Water Heater (rental)
- LED Pot Lights

- Main Bath, & Master Ensuite
- Large Kitchen
 - Soft Close Doors/Drawers
 - Crown Molding

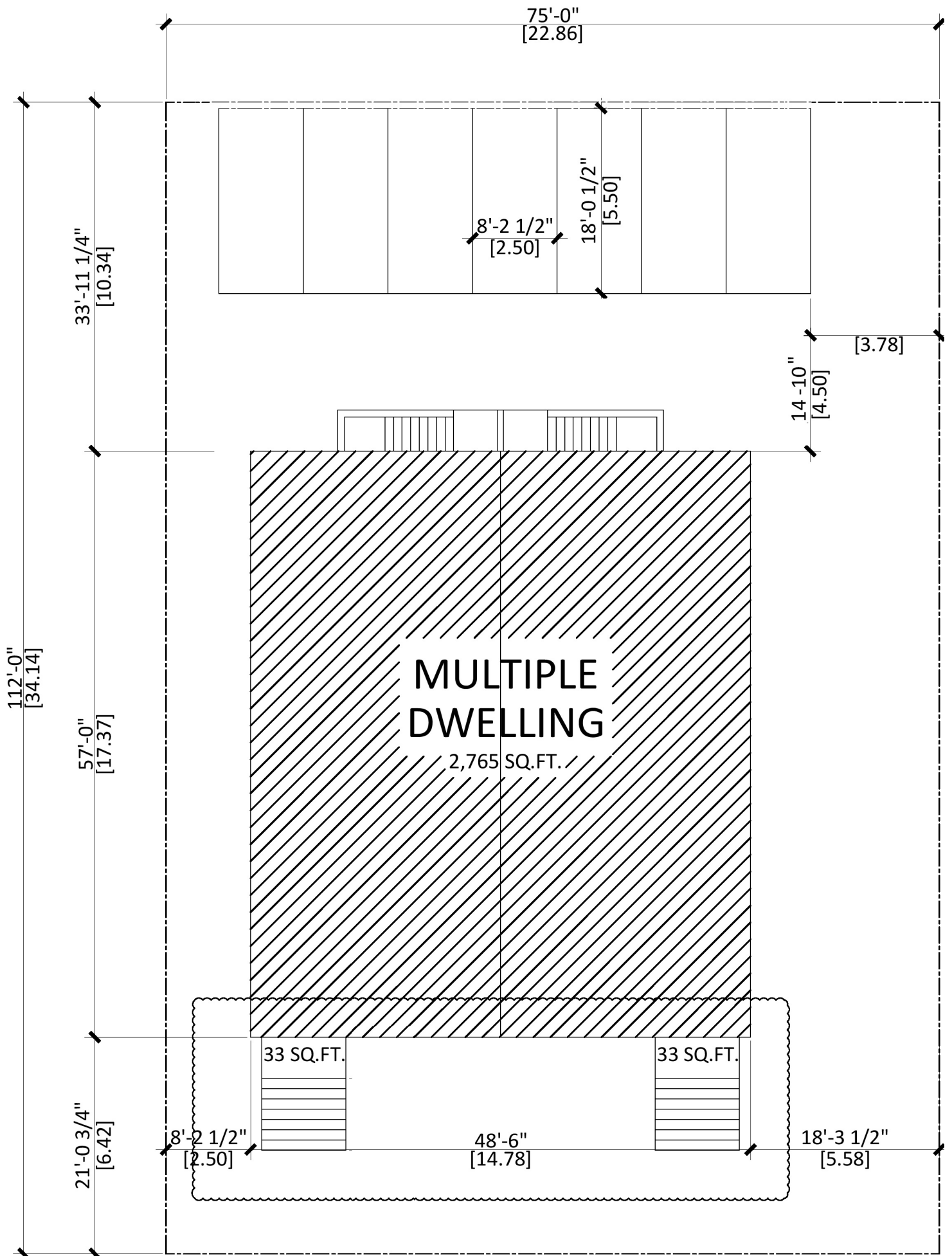
RE/MAX
 Preferred Realty Ltd., Brokerage
 Independently Owned & Operated.

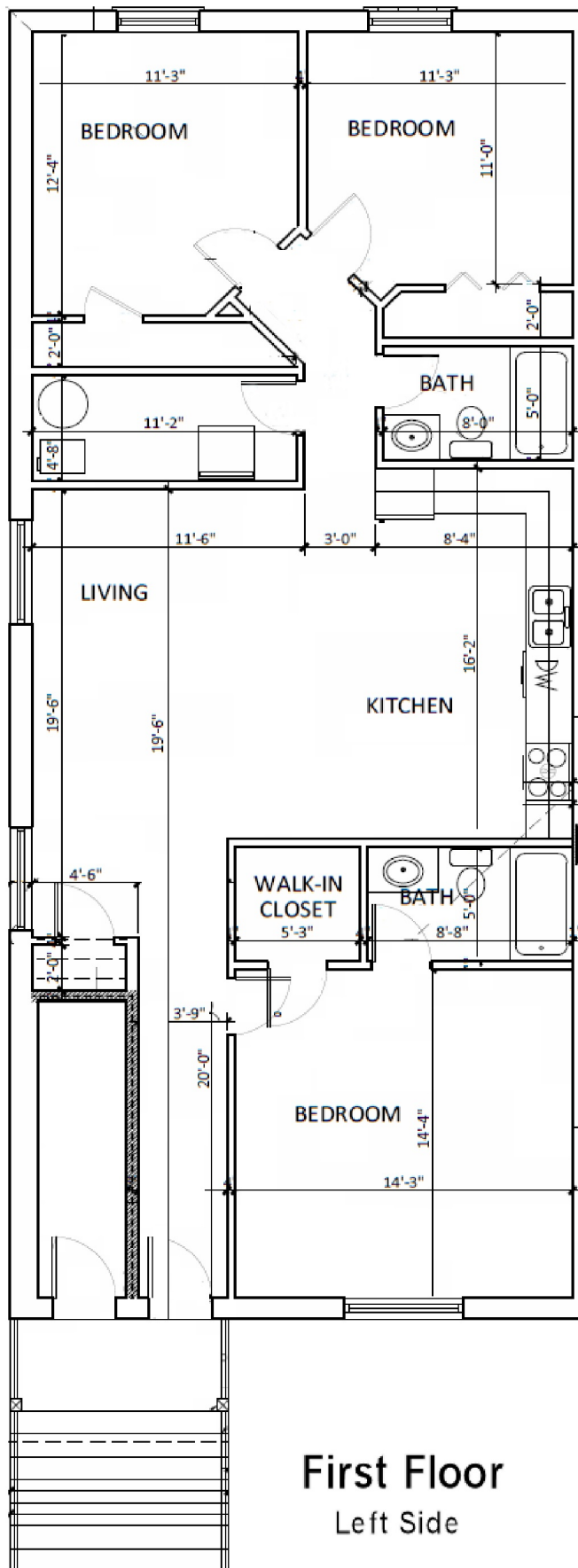
DIRECT
519-819-5299

SHADI HABIB
 SALES REPRESENTATIVE

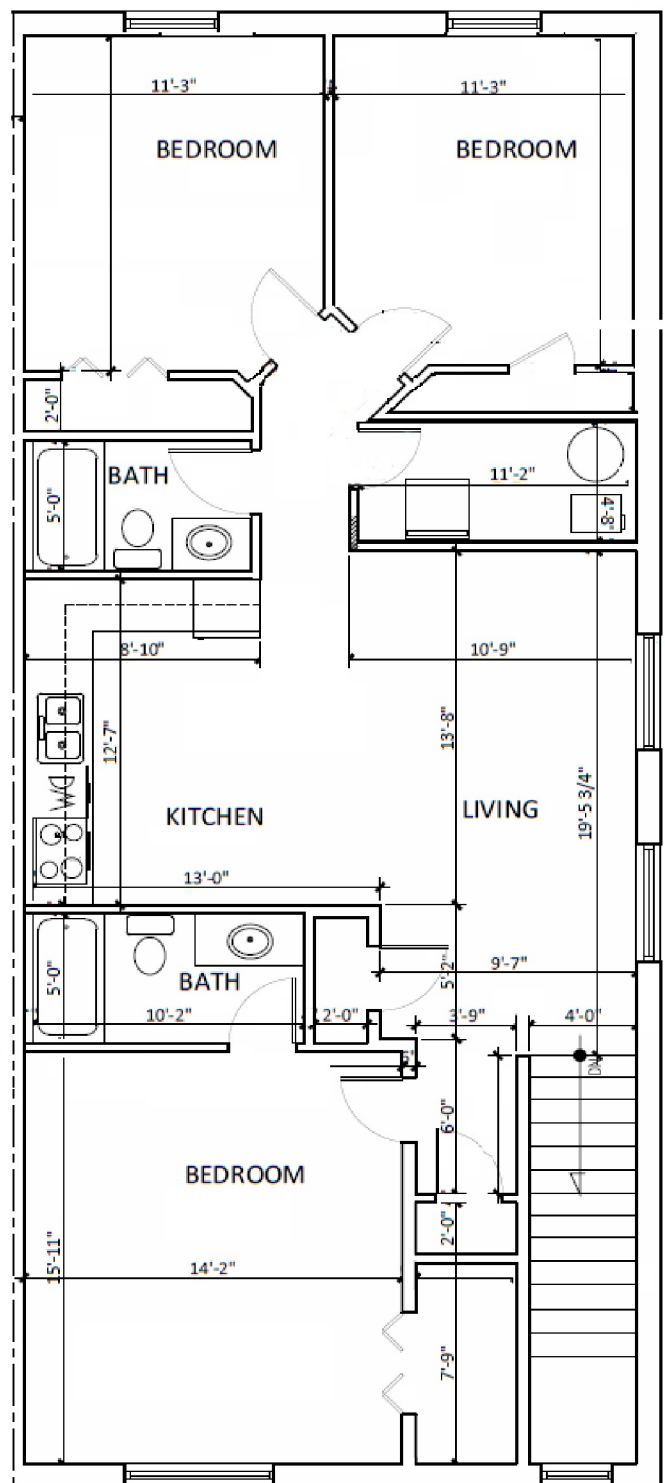
SHADIHABIBHOMES.COM



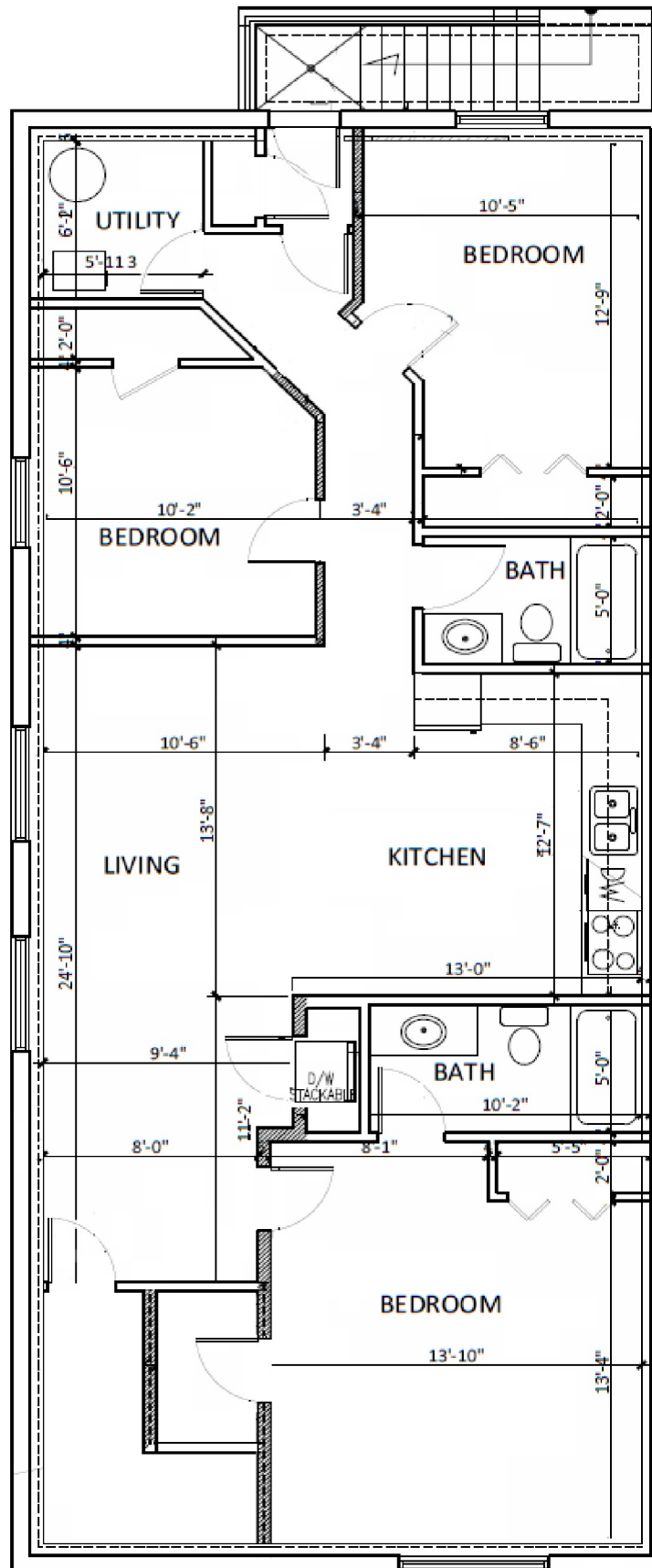




First Floor
Left Side



Second Floor
Right Side



Lower Level
Left Side

